



## 20' x 20' Meeting Room Package



### Your Package Includes:

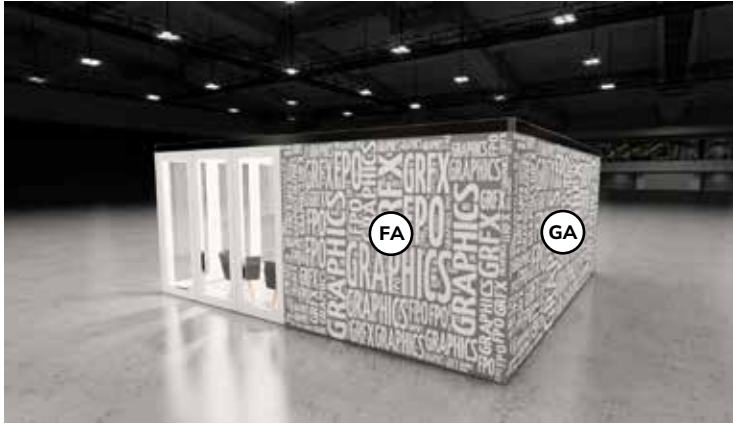
- (1) 6M x 6M x 8' Meeting Space with Ceiling and Exterior Fabric Graphics
- (2) Atomic 42" Round Table with Glass Top
- (8) Marina Chairs (White Vinyl)
- (2) Marina Barstool (White Vinyl)
- (4) Brooklyn Meeting Chair (Black Oak)
- (1) Corrugated Wastebasket
- (1) 20' x 20' Black Carpet

### Important Notes:

- No substitutions are permitted; changes and additions are at Exhibitor expense and can be ordered visiting Freeman Online.
- No additional items may be attached to freeman structure, please contact Brittany O'Briant to add a monitor.
- Please reference [this flyer](#) for Electrical and Internet Services.



## 20' x 20' Meeting Room Package



### Graphic Panels Included with Your Package:

**FA Fabric Graphic Side Walls**  
(2) 119.625" x 95.188"

**GD Cabinet Graphic**  
75.062" x 35.812"

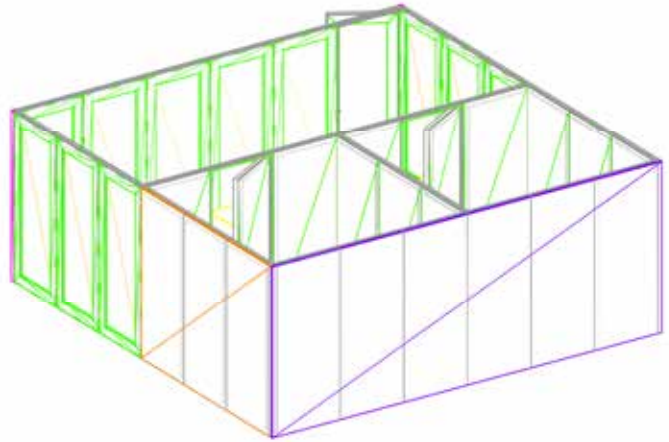
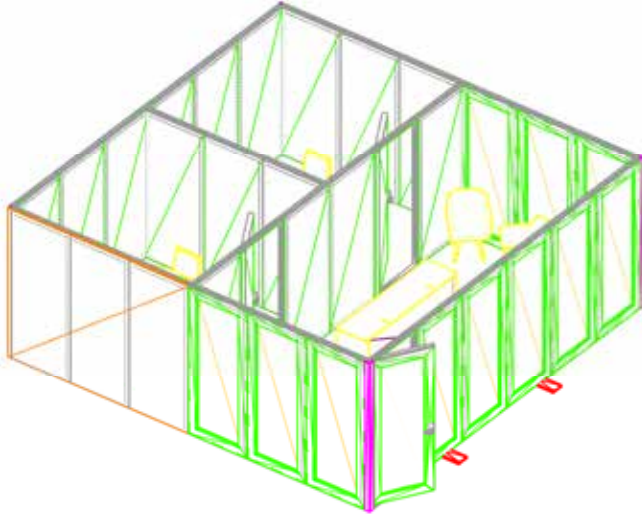
**GA Fabric Graphic Back Wall**  
239.188" x 95.188"

### Important Notes:

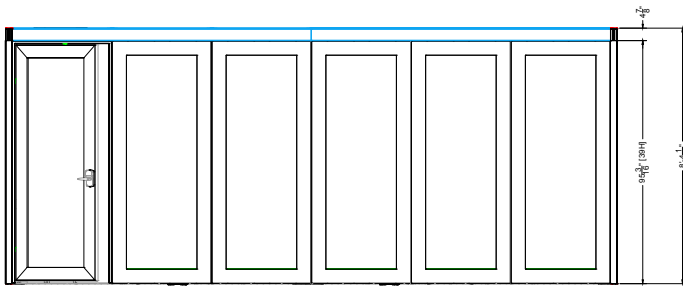
- If your artwork is not received by 08/28/2026, we will print your company logo on each panel.
- Packages purchased after 08/31/2026 will have (3) business days to submit artwork.
- Please name your files with your Company Name, Graphic Panel Names, and Upload Date (XYZCo\_C3\_8-17).



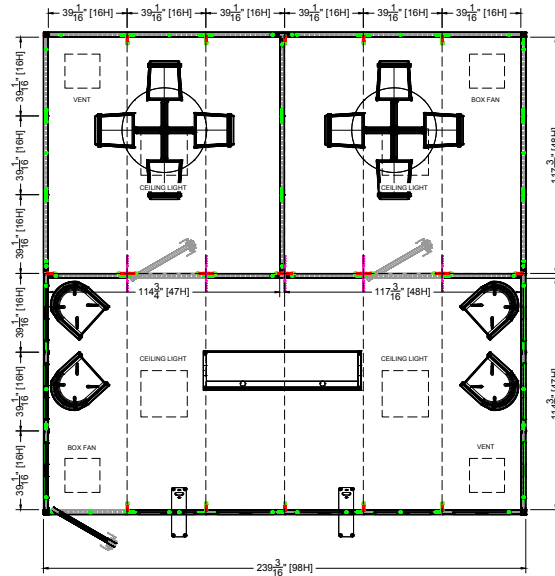
## 20' x 20' Meeting Room Package



3D View



Front Elevation



Electrical - Top View

- Please name your files with your Company Name, Graphic Panel Names, and Upload Date (XYZCo\_C3\_8-17).



## Meeting Room Packages

### PLEASE PROVIDE THE FOLLOWING WHEN SUBMITTING ART

**RASTER ART** (photos, logos containing any continuous tone images):

- Art submitted at 1:1 (100%), resolution should be no less than 60 dpi (100 dpi preferred)
- Art submitted at 2:1 (50%), resolution should be no less than 120 dpi (200 dpi preferred)
- Art submitted at 4:1 (25%), resolution should be no less than 240 dpi (400 dpi preferred)
- **Files must be 200MB or smaller. Scale large files down as needed.**

**VECTOR ART:**

- Logos should be vector and have outlined fonts (if provided as bitmap, please use high-res images) **FONTS** and **LINKS**
- Supply all fonts used in your design (zip Mac fonts). If unsure how to collect fonts, convert them to outlines
- Supply all links used in your document. Use packaging feature if available. If unsure how to collect links, embed them in the file when saving.

**COLOR:**

- If PMS color matching is required, please use original Pantone + Solid Coated swatches in your artwork. Modifying Pantone names will result in printing default color (CMYK)
- CMYK artwork will be produced "As Is". Our color output is balanced and vibrant.
- Convert RGB art to CMYK if possible.
- If you are sending Certified Color Proofs (Gracol, Swop, Fogra), please provide ICC file information used to print your samples. Best option would be to include ICC chart on your prints.

### ACCEPTABLE FILE SOFTWARE

We can work with both PC and MAC based software, and can accept art created with the ADOBE Creative Suite - Illustrator, InDesign and Photoshop

Always provide the following:

- Native files with fonts and links (zipped)
- High-res PDF-X/4 exports of the files"

### ACCEPTABLE FILE TYPES and SUPPORT FILES

**NATIVE FILES:**

- AI CLOUD (CC) file with Packaged supporting links and fonts. You may keep images linked but Packaging feature must be used.
- AI (CS6, CS5, CS4...) file with embedded links and outlined fonts
- EPS file with embedded links and outlined fonts
- INDD file with Packaged supporting links and fonts

**PRINT FILES:**

- High-res PDF-X/4 (preferred)
- AI with PDF content (choose this option when saving file)
- EPS files with embedded links and outlined fonts

**RASTER OR BITMAP ART:**

- Photoshop EPS (preferred, use 8-bit preview, Max, Quality JPG compression)
- PSD (make sure font layers are rasterized)
- TIFF, JPG (quality 8 and higher)